

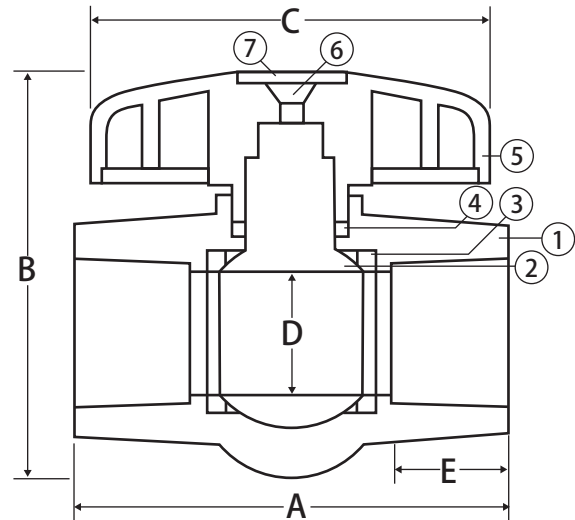
# Thermoplastic Valve



PVC • Schedule 80 • Solvent Connection • 150 WOG



S-701



## Features

- NPS connections
- Each valve tested in open and closed position
- Minimal pressure drop/turbulence
- Large ports for greater flow
- Corrosion resistant PVC material
- Wetted surfaces contain less than .25% lead content

## Approvals <sup>NSF</sup>

- NSF 61-8 Certified
- NSF 61 - Annex G
- NSF 372
- NSF/ANSI 14 (1/2" - 2")
- ASTM F1970

## Pressure Rating

- Max service temperature 140°F, 150 PSI @ 73°F continuous
- Min temperature 41°F

## Material Specifications

| No. | Part        | Materials           |
|-----|-------------|---------------------|
| 1   | Body        | UPVC                |
| 2   | Ball / Stem | UPVC                |
| 3   | Seat (2)    | EPDM                |
| 4   | O-ring      | EPDM                |
| 5   | Handle      | ABS Plastic         |
| 6   | Bolt        | Steel - Zinc Plated |
| 7   | Cap         | ABS Plastic         |

## Dimensions

| Part No. | Size   | A     | B    | C     | D    | E    |
|----------|--------|-------|------|-------|------|------|
| 210-223  | 1/2"   | 3.27  | 2.52 | 2.76  | 0.55 | 0.87 |
| 210-224  | 3/4"   | 3.74  | 3.11 | 3.46  | 0.79 | 1.00 |
| 210-225  | 1"     | 4.17  | 3.74 | 3.94  | 0.98 | 1.12 |
| 210-226  | 1-1/4" | 4.49  | 3.90 | 3.94  | 1.18 | 1.25 |
| 210-227  | 1-1/2" | 5.12  | 4.53 | 4.29  | 1.42 | 1.38 |
| 210-228  | 2"     | 5.79  | 5.31 | 5.28  | 1.83 | 1.50 |
| 210-229  | 2-1/2" | 8.03  | 6.30 | 7.01  | 2.28 | 1.75 |
| 210-230  | 3"     | 9.02  | 7.48 | 8.82  | 3.03 | 1.88 |
| 210-231  | 4"     | 11.81 | 9.17 | 10.87 | 3.86 | 2.25 |